

Microwave antenna

AL2-26/MER

ALCOMA

Microwave antenna description

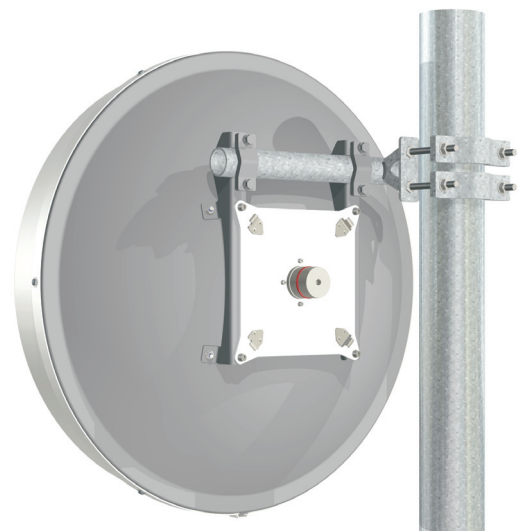
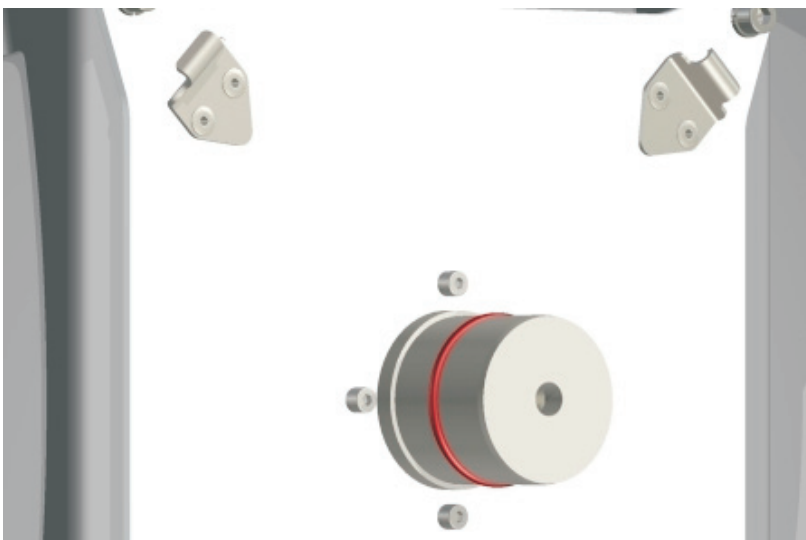
High Performance 0.65 m antenna for point to point links.

General parameters

| | |
|---------------------------|---------------------------------|
| Diameter | 0.65 m (2 ft.) |
| Feeder | single polarized |
| Input flange standard | circular, hole diameter 9.39 mm |
| - optional | IEC UBR 220 |
| Polarization | horizontal / vertical |
| Environmental temperature | -45 °C ÷ +55 °C |
| Color | gray |
| Radom material | plastic |
| Radom color | white |

Electrical parameters

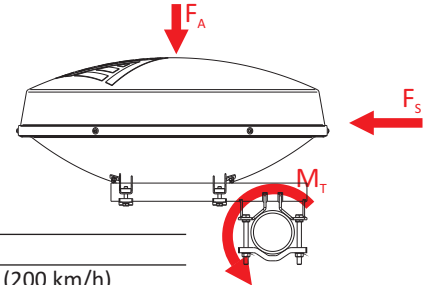
| | |
|----------------|--------------------------|
| Frequency band | 24.250 - 26.500 GHz |
| Gain mid band | 42.0 dBi |
| 3dB - BW | 1.3° (H/ V) |
| Return loss | > 1.20 (20 dB) |
| F/B ratio | 62 dB |
| XPD | 30 dB |
| Class | 2 or 3 (ETSI EN 302 217) |



Microwave antenna AL2-26/MER

Mechanical parameters

| | |
|-----------------------|-------------------------|
| Performance stability | up to 30 m/s (110 km/h) |
| Survival | up to 55 m/s (200 km/h) |
| Net weight | 9.1 kg |
| Pipe diameter | 40 - 115 mm |
| Adjust Azimuth | $\pm 180^\circ$ |
| Adjust Elevation | $\pm 25^\circ$ |



Forces and twisting moment due wind and ice

| Wind velocity | 30 m/s (110 km/h) | 55 m/s (200 km/h) |
|---|-------------------|-------------------|
| F_a - axial force | 290 N | 965 N |
| F_s - side force | 85 N | 410 N |
| M_t - twisting moment | 70 Nm | 230 Nm |
| Vertical load due to radial ice 25 mm (ice density 7kN/m ³) | | 190 N |

Outlines

