

# Microwave antenna

## AL2-23/MER

# ALCOMA

### Microwave antenna description

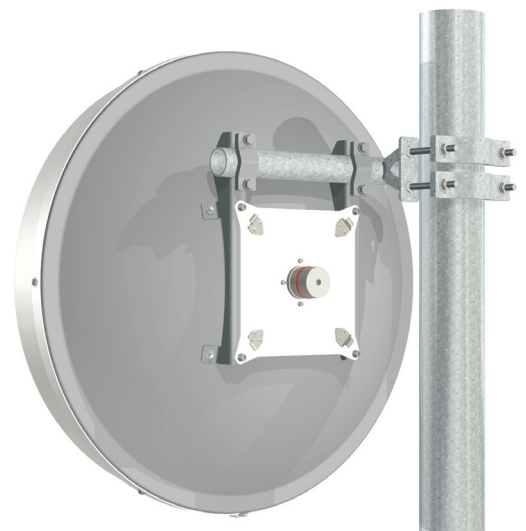
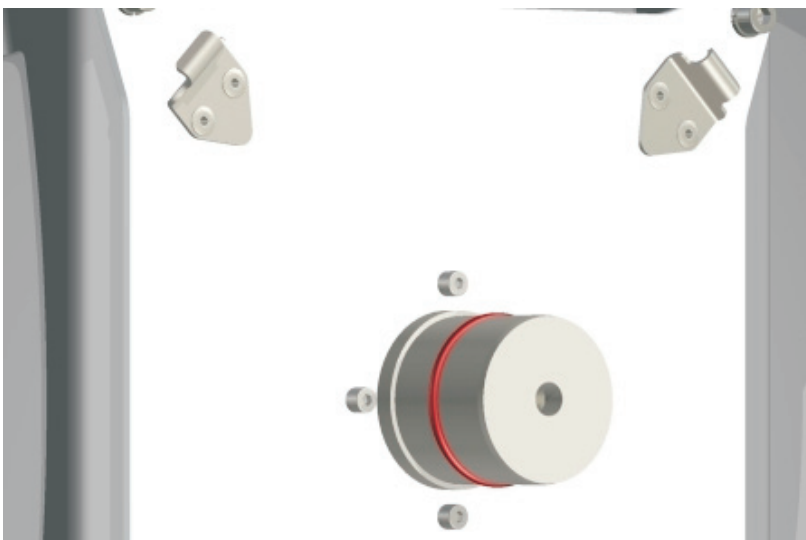
High Performance 0.65 m antenna for point to point links.

### General parameters

Diameter	0.65 m (2 ft.)
Feeder	single polarized
Input flange standard	circular, hole diameter 9.53 mm
- optional	IEC UBR 220
Polarization	horizontal / vertical
Environmental temperature	-45 °C ÷ +55 °C
Color	gray
Radom material	plastic
Radom color	white

### Electrical parameters

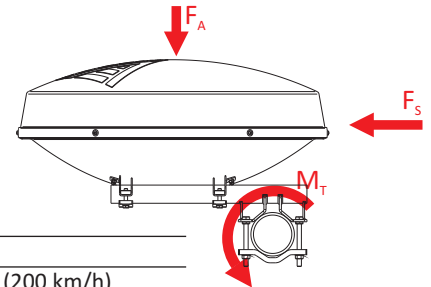
Frequency band	21.200 - 23.600 GHz
Gain mid band	41.0 dBi
3dB - BW	1.6° (H/ V)
Return loss	> 1.20 (20 dB)
F/B ratio	61 dB
XPD	30 dB
Class	2 or 3 (ETSI EN 302 217)



## Microwave antenna AL2-23/MER

### Mechanical parameters

Performance stability	up to 30 m/s (110 km/h)
Survival	up to 55 m/s (200 km/h)
Net weight	9.1 kg
Pipe diameter	40 - 115 mm
Adjust Azimuth	$\pm 180^\circ$
Adjust Elevation	$\pm 25^\circ$



### Forces and twisting moment due wind and ice

Wind velocity	30 m/s (110 km/h)	55 m/s (200 km/h)
$F_a$ - axial force	290 N	965 N
$F_s$ - side force	85 N	410 N
$M_t$ - twisting moment	70 Nm	230 Nm
Vertical load due to radial ice 25 mm (ice density 7kN/m <sup>3</sup> )		190 N

### Outlines

